

STRÖM | Portfolio

ström

ström

Over the past 15 years of designing and specifying lighting for spaces, human impact has always been at the forefront of what we do.

Ström's mission is to create timeless, lasting lighting schemes with restrained design intervention and minimal burden on our planet through responsible sourcing.

Our designs are dictated by the needs of the project and we strive to enhance spaces with light, not luminaires.





ANNA CLARA SANDGREN

Co-Founder

Anna originally comes from an Interior Design background having graduated from University of the Arts London with a degree in Interior and Spatial Design.

In 2011 Anna completed her MSc in Light and Lighting at the Bartlett, UCL. She joined the then newly founded Nulty where she spent 9 years progressing to Associate Designer leading a wide range of award winning projects and gaining experience working in the Middle East, Asia and American markets.

After 16 years living in the UK Anna moved back to Sweden at the end of 2020 where she co-founded Ström with her partner Emilio Hernandez.

Anna is also a founding member of the new initiative Green Light Alliance (GLA) which is a passion project run by like minded designers and manufacturers in the lighting industry with an aim to promote circular design.



Experience

Ström

Co-Founder

Dec 2020 - Present

Nulty+

8 years 8 months

Associate Lighting Designer

July 2017 - November 2020

Senior Lighting Designer

June 2014 - Nov 2017

Intermediate Lighting Designer

April 2012 - June 2014

Shaun Clarkson ID

6 months

Interior Designer

Apr 2009 - Feb 2011

Zachary Paulman

6 months

Interior Designer

Apr 2009 - Sep 2011

Education

The Bartlett, University College London

2011-2012

MSc, Light & Lighting

University of the Arts London

2006-2010

BA Hons, Interior & Spatial Design

Awards / Publications

Harrods Women's Wellness Clinic Lighting Design Project
of the Year - Shortlisted
FX Awards 2017

Harrods Women's Wellness Clinic Best Interior Lighting
Scheme High Budget - Shortlisted
Darc Awards 2017

Lighting Design Awards, 40 Under 40
Selected as one of 40 under 40 Promising Lighting
Designers of 2017.

Selfridges Body Studio Lighting Design Project of the
Year - Shortlisted
FX Awards 2016

Selfridges Body Studio - Best Lighting and Fixturing -
Shortlisted
Retail Week Interiors Awards 2016

Selfridges Body Studio - Retail Lighting Project of the
Year - Highly Commended
Lux Awards 2016

Project Experience

Education :

Newnham College, Cambridge

London College of Camberwell

Retail:

Stella McCartney, Rollout

Selfridges Eyewear Destination

Selfridges Mens Designer Street

Selfridges Shoe Galleries

L'Occitane, Regent Street

Fenwick, Bracknell

Fenwick, Colchester

Younger, Wuxi, China

C&A Bern, Switzerland

Bloomingdales, Kuwait

Selfridges Designer Studio

Selfridges Body Studio

Selfridges Menswear & Personal Shopping

The Bowl, Selfridges

Knauf Showroom, Clerkenwell

Nike Town. London

Samsung KX, Coal Drops Yard

Commercial

Selfridges Executive Offices

Selfridges B&M Offices

Workplace Lighting, Clerkenwell

Riverside House

Hospitality & Leisure:

Archlight Cinema, Battersea

Assembly Hotel, London

The Ritz Carlton, Astana

The Wellness Clinic, Harrods

Manhattan Loft Gardens; *Hotel*

Food & Beverage:

The Connaught Patisserie

Champagne Bar Selfridges

Haz Restaurant

The Ritz Carlton Astana

Scarpetta, Canary Wharf

Mere Restaurant, Charlotte Street

Hemsley + Hemsley Cafe

Workshop Coffee, Clerkenwell

Residential:

1no Grosvenor Square

Cathcart Road

Manhattan Loft Gardens

St Dunstan's Court, Fetter Lane



EMILIO HERNANDEZ

Co-Founder

Emilio originally worked in natural daylight design but now works predominantly in artificial lighting design. He has worked on a diverse set of projects with experience in residential, mixed use commercial, hospitality, schools and urban regeneration projects.

After 15 years in lighting design in London (just as he was starting to get the hang of it) Emilio recently moved to Sweden and co-founded 'Ström' (with his partner Anna Sandgren). This move has provided the independence to form partnerships to help develop & promote the sustainable lighting design values needed as we head to a net zero carbon future.

As an active member of the lighting community Emilio has spoken at design conferences and provided CPD's and is one of several founding members of the [Green-Light Alliance](#) and current sitting chair.



Experience

Ström
Current
Co-Founder
Dec 2020 - Present

Nulty+
6 years 5 months
Director
Nov 2017 - Nov 2020
Associate Lighting Designer
July 2014 - November 2017

GIA Equation
4 years
Senior Lighting Designer
Aug 2010 - July 2014

Hilson Moran
4 years
Lighting Designer
Aug 2010 - July 2014

Education

Nottingham Trent University
2000-2005
BA Hons, Product Design

edX, Delftx
2020-2021
Circular Economy: An Introduction
LIF Advanced Certificate: 2008

Publications

Ever Increasing Circles
Arc Magazine, issue Feb/March
25 Feb 2021

Accidental Feminist
Women In Lighting
2nd Aug 2019

Making Retail Relevant -
Darc Magazine
Jun 2019,

Fine Tuning - Apr 2016, Retail Focus
Lighting Focus - Apr 2016, FX Magazine
Defining Light - May 2018, ID Magazine

Project Experience

Public Realm/Planning:
Bolshevik Redevelopment, Moscow
261 City Road Basin, London
Battersea Power Station, Phase 1
King Abdulaziz Centre for World Culture
De Montfort University, Mill Lane
Chelsea Barracks Masterplan, London
Cairo Central Business District
Skolkovo, Moscow
Line Wall Road, Gibraltar
Embassy Gardens, Nine Elms, London
Trewint Street (planning)

Commercial:
Newcourt Headquarters, Rothschild Bank
UBS 5 Broadgate, London
Fidelity Headquarters Cannon Street, London
Selfridges Nations House
Selfridges Creative studios
Google Offices, Paris & London
20 Canada Square, Canary Wharf
Qatar Air Lounge, Dubai & Paris
Jane Street, London
Take 2 Interactive, London

Hotels:
Hotel Schweizerhof, Bern
East London Club, Devonshire Square
The Cumberland Hotel, London
Manhattan Loft Gardens, London
Sheraton Dushanbe, Tajikistan

Food & Beverage:
Vivi Restaurant, London
East London Club, Devonshire Square
Hard Rock Hotel, London

Residential:
Chelsea Barracks (Phases 1-4)
Barrett Street
Battersea Power Station RS01 A&B
Manhattan Loft Gardens; *Residential*
Cleveland Street
6 Herbrand Walk, Brighton
The Broadway, London
Dovehouse Street, London
The Dell House

Retail:
Harrods (various)
Nike (various)
Bloomingdales, Dubai
Selfridges (various)
Brent Cross Shopping Centre
Rowbots, London

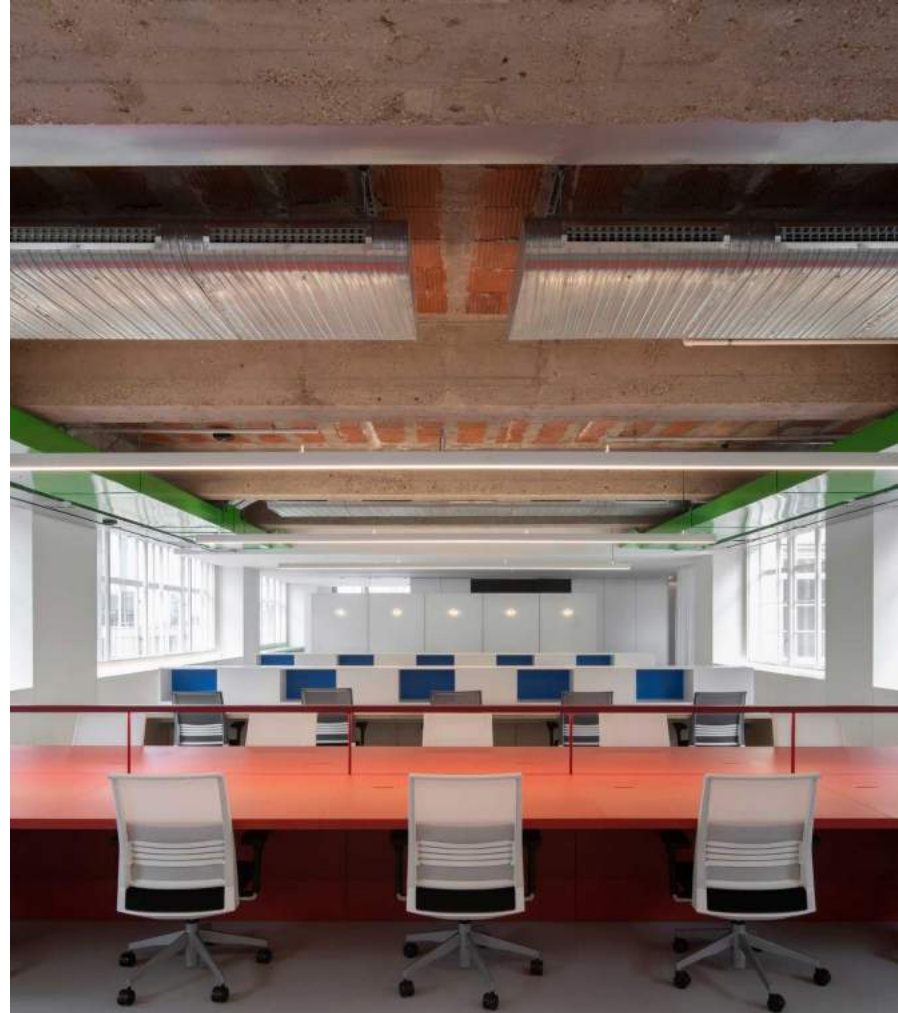
Commercial

ström

Selfridges B&M Offices

Selfridges Buying and Merchandising office space is a modern infusion of Brutalist architecture, comfort and colour. The strategic, low-energy lighting solution uses intentional but discreet light fixtures to promote an uncluttered, focused, and stylish environment.

The office space isn't over done with different ideas and lighting schemes – instead, the same family of light fittings have been used creating a recognisable journey for employees.





CLOCKWISE FROM TOP LEFT:
2/ WC's 3/ Breakout Area
4/ Reception Lobby

OSF Offices

The design intent for this original workspace was to balance layers of light to create a mixture of different environments. Be it a collaborative setting for social interaction, a focused area for work or a quiet spot for personal wellbeing, the lighting scheme is attuned to the people using each individual space.

A linear track and spotlight system acts as a recurring theme throughout. The system provides a blend of task lighting and soft diffused illumination.





CLOCKWISE FROM TOP LEFT:
2/ Reading Room 3/ Breakout
Area & Town Hall 4/ Hot Desks



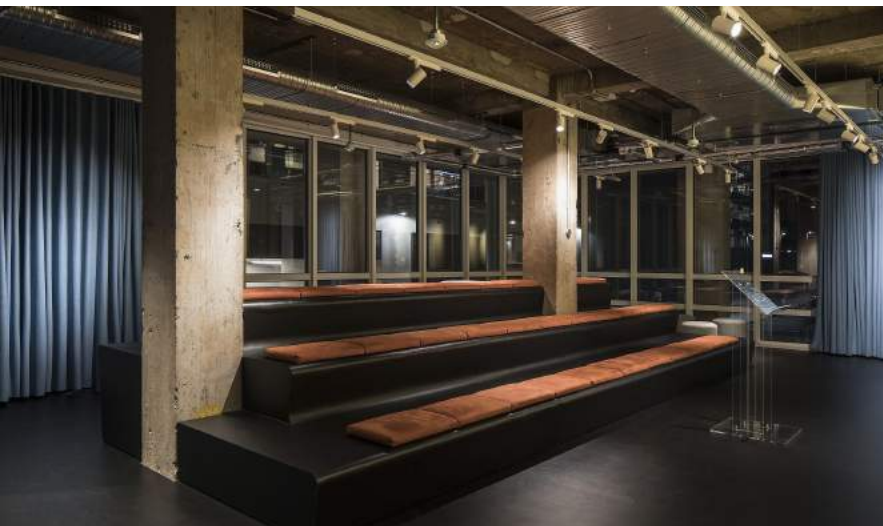
Creative Studio London

This space was designed with a focus on how the team will work within the space. We used one linear profile throughout that cleverly accommodates different light "modules" for different lighting needs.

Pin-up and backdrop walls are lit suing different optics to the open-plan working areas, diffuse light from the suspended profile provides general illumination (Anglepoise desk lamps, were relamped and re-used to reduce the amount for new lighting needed and allow lower general lighting levels)

Creating contrast within the creative studio was an important design factor for the space to feel varied and appealing. Lower illumination levels and different decorative and architectural fittings in the common room, reception and pod areas offer a change in mood and function from the working areas.





CLOCKWISE FROM TOP LEFT:
2/ Breakout Room 3/ Open Plan
Office 4/ 'The Forum'

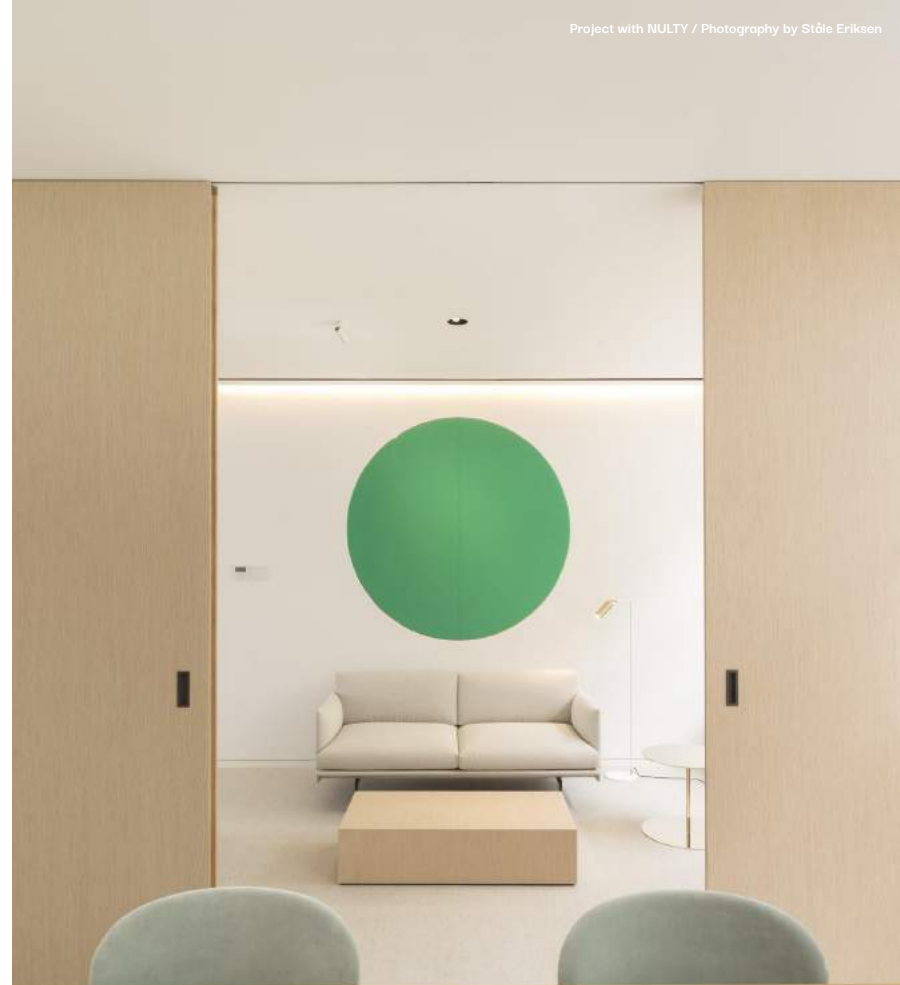
Selfridges Executive Office

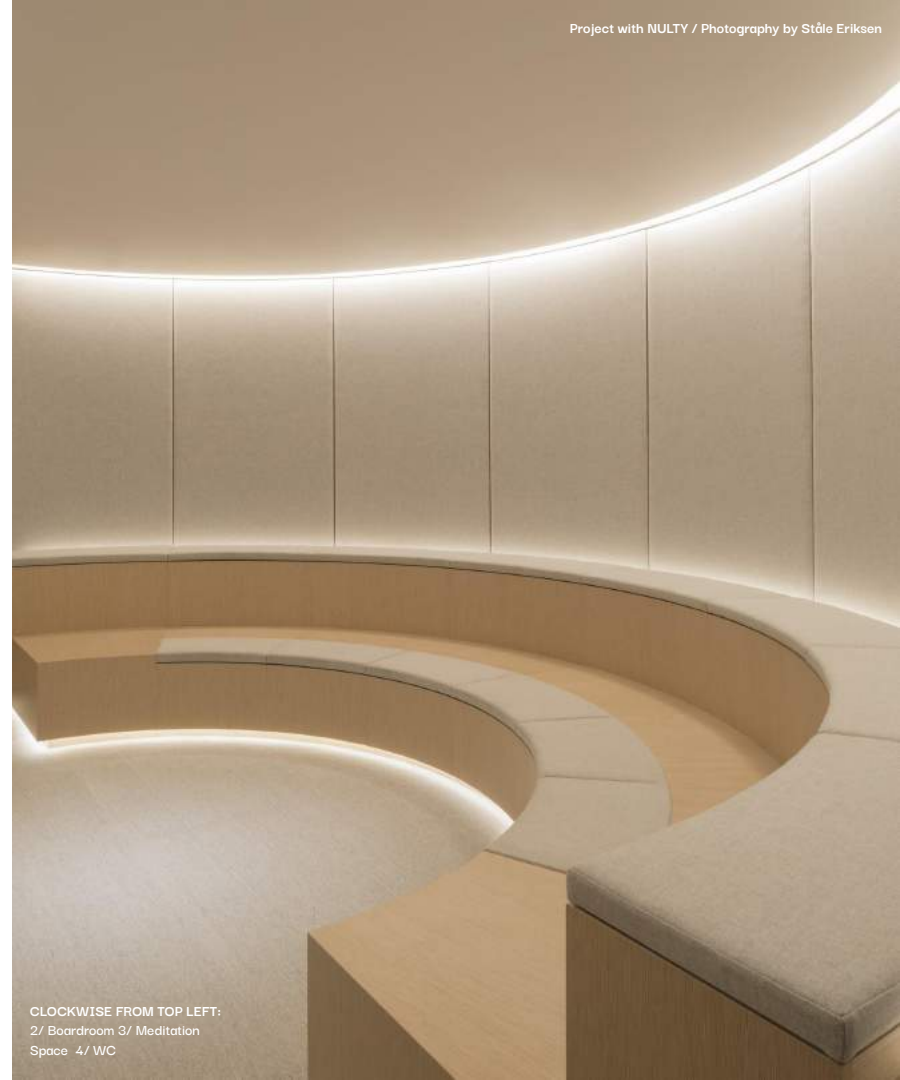
The remodelling of Selfridges 300m2 executive office floor was undertaken with Alex Cochrane architects..

The material palette mostly consists of terrazzo, oak and fabric set against white plastered walls with colourful joinery interventions that offer surprise and playfulness.

The intense level of detailing and fine workmanship is reminiscent of residential design and a comprehensive furniture package ensures no two rooms are the same. As such the lighting design needed to be understated to avoid feeling overly commercial by comparison whilst still achieving functional levels and uniformity needed for the work space.

This was achieved through integration of lighting in coves and joinery to provide diffuse light levels and discrete low glare direct lighting from spotlights and downlights used sparingly and only over task areas.





CLOCKWISE FROM TOP LEFT:
2/ Boardroom 3/ Meditation
Space 4/ W/C

Selfridges Nations House

Selfridges Nation's House is the main entrance for staff and guests to the buildings head office. Back illuminated ceiling panels in the below ground visitor reception create a simple but sleek lighting installation.

The backlit, double-layered stretch fabric is a tailored design that maximises the ceiling area with diffuse light, following and emphasising the buildings structural grid.

This also acts as a neutral canvass for the striking new entrance canopy, colourful neon artwork installation and custom floor finish





CLOCKWISE FROM TOP LEFT:

2 & 3/ Reception Lobby &

Integrated Reception Desk

4/ Coffee Bar



Bolshevik Factory Moscow

John McAslan & Partners oversaw the renovation and extension of the 19th Century factory complex into a business and cultural complex on the Leningradsky Prospekt just outside of Moscow's city centre.

The former confectionary factory was the first building in Moscow to utilise electrical lighting and it lighting forms a key element of its character after renovation. The 'tree like' structural columns in the five storey atria have light integrated to their base and the listed facade and accessible landscape use layers of light to create rhythm and scale.

The lighting design is achieved largely through concealed and minimalist fixtures to sensitively compliment the juxtaposition of modern and traditional building elements.





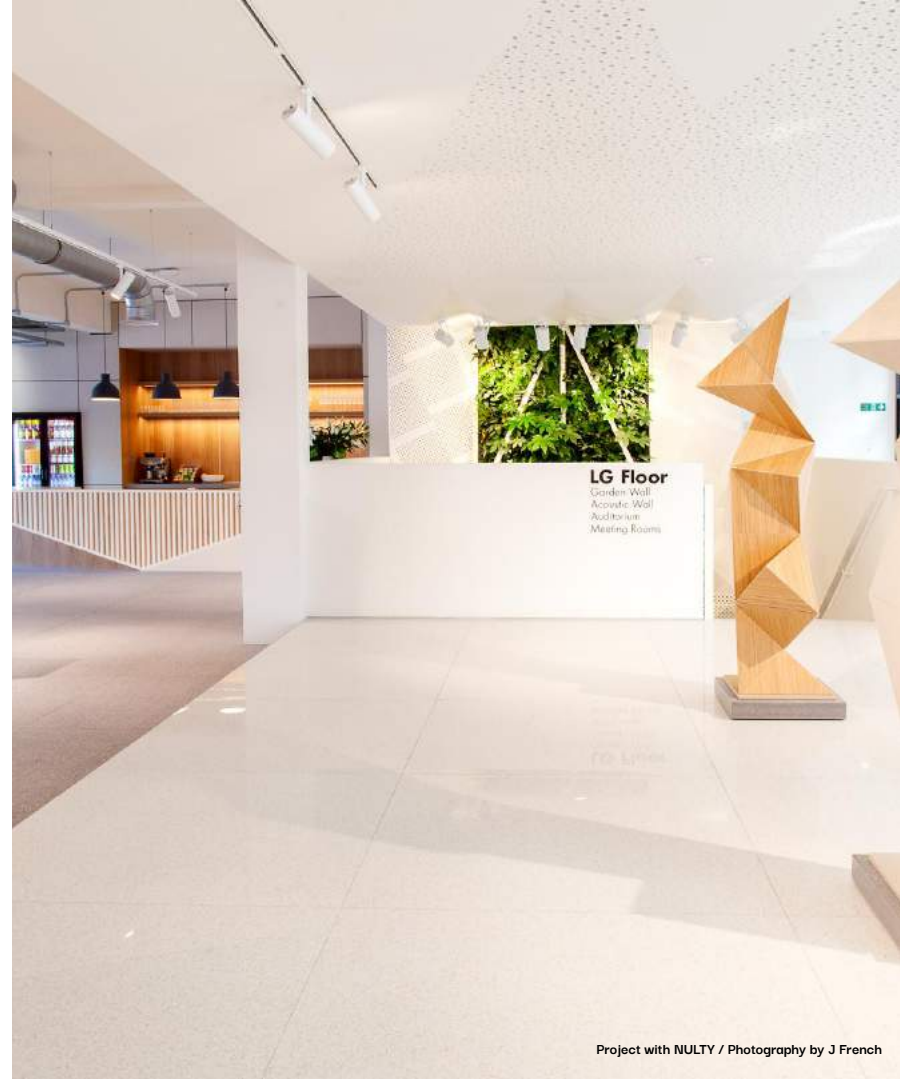
CLOCKWISE FROM TOP LEFT:
2 Original Factory and Main
Entrance 3/ Russina
Impressionism Museum
4/ Secondary Entrance &
Clocktower



Knauf Showrooms

Knauf's Clerkenwell showroom presents its gypsum products in a stylish and innovative way: from geometric sculptures and acoustic panelled walls, to a colourful fan-like window installation and sleek, contemporary bar.

he architectural lighting scheme is simple yet considered, allowing the form and texture of the products to talk. For example, spotlights highlight three human-sized installations in a glass-fronted gallery area – at night these statuesque sculptures are the only luminous objects, aside from a Knauf logo, and get the full attention of passers-by.





CLOCKWISE FROM TOP LEFT:
2/ Reception Desk 3/ Boardroom
4/ Breakout Space



Riverside House

This project involved the renovation of two reception lobbies to this prominent riverside office building to improve accessibility, meeting facilities and accommodation for cyclists and commuter alike.

The building will host several companies, requiring a neutral material palette whilst still being in line with the buildings prominence and contemporary aesthetic. The lighting design supported this message through emphasising feature materials and create visual interest by layering of light in deep plan areas with minimal natural light.

See a virtual tour of the lobbies [here](#).





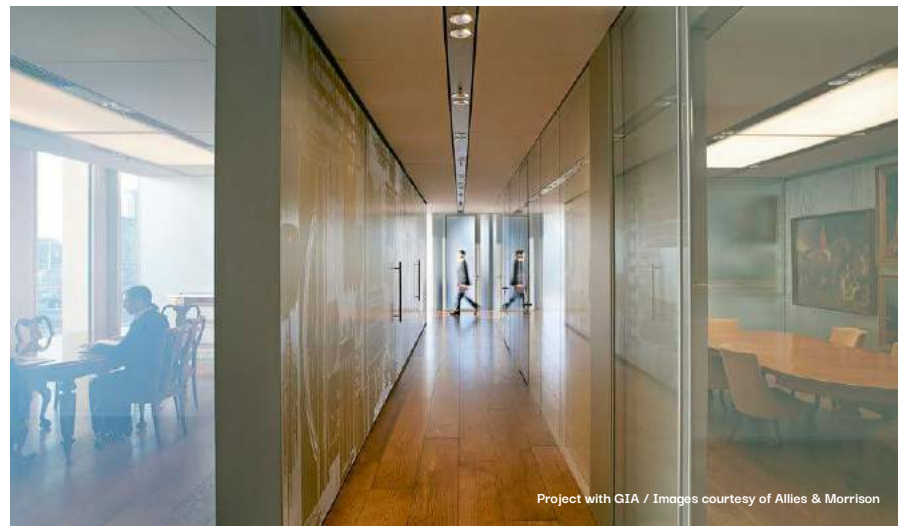
CLOCKWISE FROM TOP LEFT:
2/ Southwark Bridge Lobby 3/
Riverside Entrance 4/ Waiting
Area 5/ Collaboration Space.

Rothschild Bank New Court

The Rothschild bank headquarters have been located on this site since 1809, this Rem Koolhaas designed (OMA and Allies&Morrison) building is the 4th incarnation of Rothschild building in this location. Completed in 2011 it accommodate the demand for increased space as well as opening up views and access to the adjoining St Stephens Wallkbrook churchyard.

Use of natural daylight is the cornerstone to the lighting design which uses an innovative daylight mimicking system on the office floors with colour tunable lighting. A pioneering use of LED in the dual purpose client meeting & dining rooms incorporated backlight the translucent Kvadrat fabric ceiling enabling the panels to 'disappear' when switched off and use downlights to create an atmosphere more suited to dining.





CLOCKWISE FROM TOP LEFT:
2/ Southwark Bridge Lobby 3/
Riverside Entrance 4/ Waiting
Area 5/ Collaboration Space.



STRÖM PROJECT PORTFOLIO - Lightingbyström.com



Project with NULTY / Images courtesy of realia.co.uk

Retail

ström

Selfridges Body Studio

Covering 3500 square meter of retail luxuriousness this is not only Selfridges' largest department, it's a new concept that stands to "revolutionise" the way women shop for everything bodywear. The lighting scheme creates a unique "mood" for each retail pocket. Individuality aside, it was important for the overall space to feel as one so we used the same ceiling layout throughout.

We collaborated with interior designers Neri&Hu and FDArchitecture to make sure the lighting design solution worked with, and reinforced, the design brief for the new space, and we're pretty pleased with the results.





CLOCKWISE FROM TOP LEFT:
2/ Changing Rooms
3/ Activewear 4/ Lingerie





C&A Bern

This lighting scheme formed part of a design rollout across Europe. It brings the C&A brand up-to-date, giving customers a shopping experience that feels current and high-end. The flagship stores lighting solution is considered, practical and fun, as well as low-energy, cost-effective and sustainable.

A white, dropped raft ceiling outlines retail areas and houses troughs with track-mounted spotlights to highlight the perimeter merchandise. Timber ceiling slats work alongside the white detail, breaking it up, and conceal spotlights and lines-of-light,

To achieve a different atmosphere in each department, spotlights were used with a range of beam angles. For example, narrow beams create high contrast for an urban feel in menswear and denim, whereas wider ones create a softer experience in lingerie and womenswear.





Ritz Carlton Astana

The Ritz-Carlton in Kazakhstan's capital is located in [Talan Towers](#). The third floor hosts MÖKKI, an all-day dining restaurant with a stunning 'curved finned' feature ceiling. The dropped timber fin canopy stems from columns to form a relaxing organic pattern. The architectural lighting scheme complements the statement piece through carefully positioned luminaires in the soffit (above the canopy), which graze light across the fins for a dappled effect.

Elsewhere in the restaurant, the lighting solution works with the ceiling's architecture. Surface-mounted spotlights nestle within a bronze trough that cuts through the finished ceiling. This is complemented by a suspended rail with adjustable spotlights, which drops from the same detailing to provide a focus along the continuous marble counter, drawing the eye through the space.





CLOCKWISE FROM TOP LEFT:
2/ MÖKKI restaurant
3/ Marble Counter 4/ Selfi Restaurant

Younger Wuxi, China

A zigzag patterned glass façade washed with warm light forms a "glowing box" to make Youngor's first flagship store stand out from the crowd.

We worked with the design agency 'Campaign' to produce a contemporary and elegant lighting scheme to bring a new, refined identity to the Chinese fashion brand.





CLOCKWISE FROM TOP LEFT:
2/ Waiting Area
3/ Womens wear 4/ Atrium Feature

Stella McCartney

Together with Stella McCartney's inhouse design team a lighting scheme was rolled out across Europe, US and Asia in 2018-2019.

Putting extra emphasis on the stunning vertical surfaces the customers is drawn into the space while narrow beam spotlights highlights the products displayed as works of art.





CLOCKWISE FROM TOP LEFT:

2/ Entrance

3/Lobby 4/ Footwear

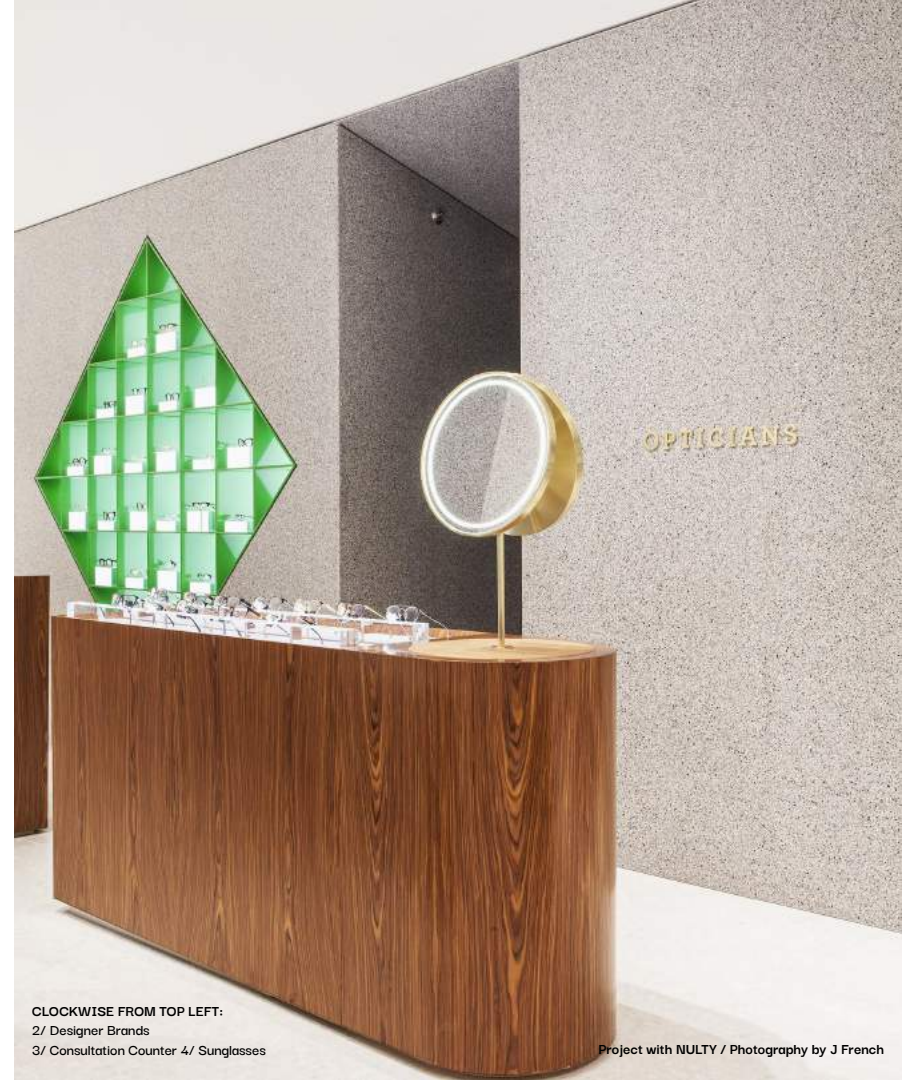
Selfridges Optical Department

Completed in 2019, Selfridges' new optical destination is the final part of the store's magnificent Accessories Hall makeover.

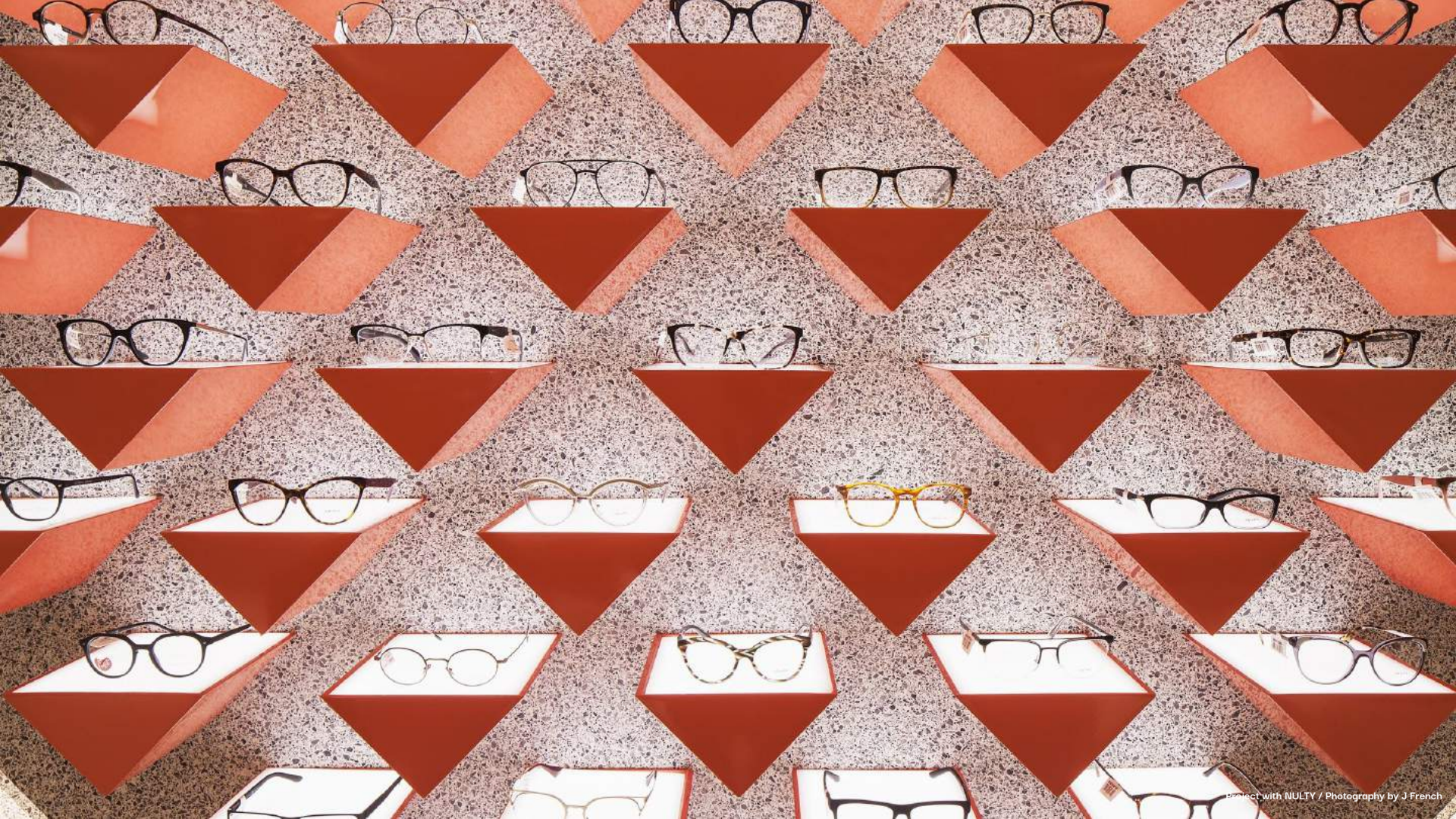
Working alongside Alex Cochrane Architects and FDA we created an entirely LED lighting scheme that exudes high-end, to do justice to the specs and sunnies, and each element of the luxury interior design.

Where optical retail is concerned visual comfort is the highest priority which is achieved through integration of lighting within display cases to allow lower levels of general lighting and soft ambient lighting, particularly in consultation rooms





CLOCKWISE FROM TOP LEFT:
2/ Designer Brands
3/ Consultation Counter 4/ Sunglasses



Specsavers

The world's largest privately owned optical company with a focus on value, service and material quality.

This design roll out project across UK, Nordic countries and Australasia focussed on using lighting to create improved visual comfort in store. The goal was not just to create a more appealing retail experience but to create more comfortable consultation area for eye and audio health checks.

To maximise the adoption of the new design had to consider all three regions and be able to be applied to certain fixed constraints such as modular ceilings and a range of typical store layouts. .



MAIN IMAGE:
1/Diffuse linear LED & accent
lighting to wall finishes..

Project with NULTY / Images Courtesy of Specsavers



CLOCKWISE FROM TOP LEFT:
2/Display Case close up 3/
Flexible shelving 4/ Consultation
Room (dimable for tests and
inspections).



Fenwick Bracknell

Bracknell's brutalist architecture has been banished for a new-build shopping complex called The Lexicon. Fenwick has added its touch to the retail hub with a fresh, contemporary department store that takes design inspiration from the town's surrounding woodland.

The all LED, low-energy lighting scheme builds on the influence of nature across the store's three floors. Carefully positioned downlights pepper ceilings with an organic, leaf-like flow and the escalators' punctuated metal undersides are back illuminated to create the illusion of "dappled" light.





CLOCKWISE FROM TOP LEFT:

2/ Fragrances 3/Menswear

4/ Circulation atrium

Project with NULTY / Photography by J French



Selfridges Men's Designer

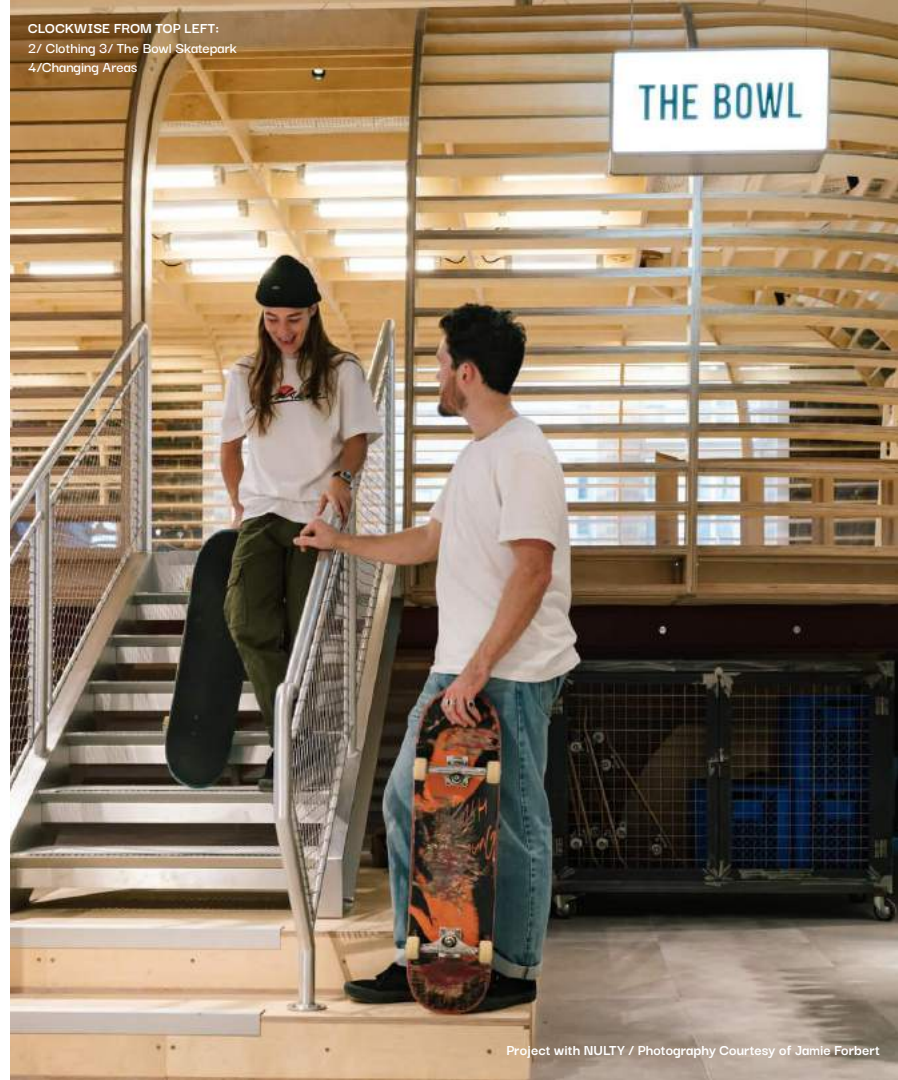
Men's street fashion is fast-changing and dynamic. The concept for the new space had to be a flexible framework, tough in both material and form. Making reference to billboards and drive-in movie screens, we constructed an adaptable set of frameworks in mill-finished aluminium.

The lighting needed to be flexible and dynamic. This was achieved by a track and spot system tucked away amongst the mechanical services.





CLOCKWISE FROM TOP LEFT:
2/ Clothing 3/ The Bowl Skatepark
4/ Changing Areas



Samsung KX

Samsung KX was a one-of-a-kind project that shows how lighting can be transformative in terms of architecture and experience.

The inspirational and inviting experience-led retail concept in Coal Drops Yard, King's Cross, has been conceived under Heatherwick Studio's "kissing" rooftops and needed a lighting solution befitting its architectural backdrop.





CLOCKWISE FROM TOP LEFT:
2/ Amphitheatre 3/ Consultation Area
4/ Tech Display

Project with NULTY / Photography courtesy of Client

L'Occitane

Beauty and Skincare brand L'Occitane has opened a new flagship store on Regent Street, which is spread over two floors and divided into different areas.

The ceiling is clean and uncluttered needing very few, carefully positioned downlights that highlight products, and perimeter joinery displays wrap the external walls and feature integrated luminaires for an extra layer of contrast.

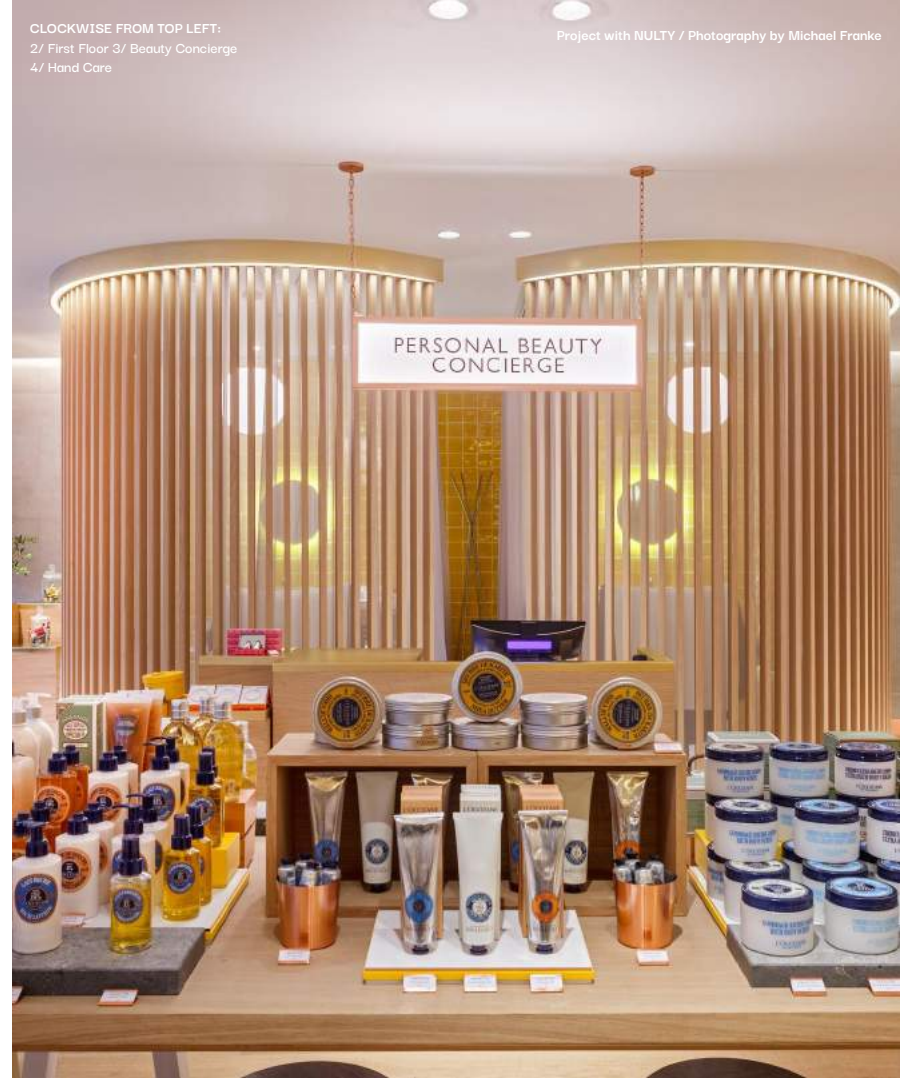
In keeping with the brand's natural ethos, floral displays surround columns and are illuminated by miniature downlights that bring the installations to "life". Finally as this is a skincare and beauty application colour rendition of skin tones and related colours was critical in specification of the quality, colour temperature and colour rendering of luminaires.





CLOCKWISE FROM TOP LEFT:
2/ First Floor 3/ Beauty Concierge
4/ Hand Care

Project with NULTY / Photography by Michael Franke



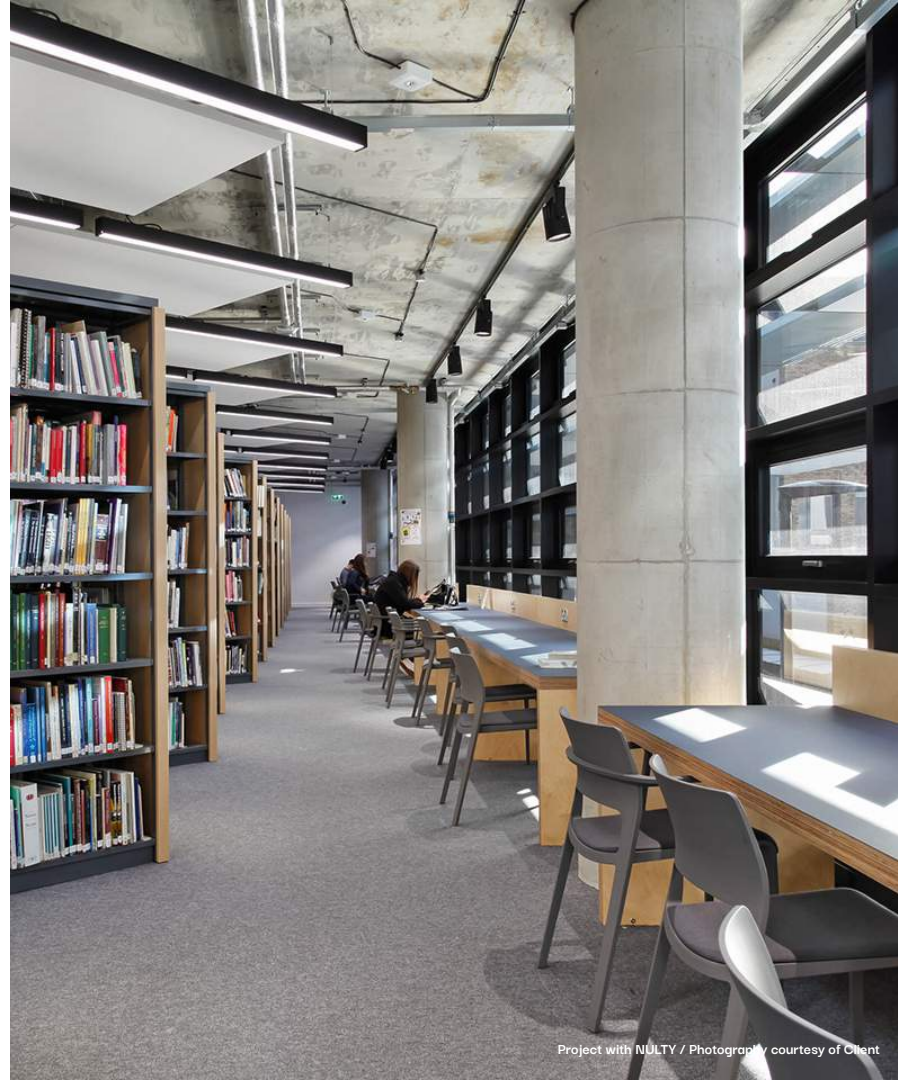
Education

ström

Camberwell College of Art

The redevelopment of Camberwell College of Art is part of a wider University of the Arts London regeneration investment. In Camberwell, much of the original 1970s building has been refurbished, with the addition of a 6,000m² extension.

Together they house an expanded library, a lecture theatre and creative studios offering facilities for students and staff across ceramics, illustration, graphic design, painting, photography and sculpture. A dedicated new building, housing 264 rooms for student accommodation, has been designed by Stephen Marshall Architects.





STRÖM PROJECT PORTFOLIO - Lightingbyström.com

CLOCKWISE FROM TOP LEFT:
2/ Display Hall 3/ Workshop
4/ Library



Project with NULTY / Photography courtesy of Client

Newnham College Cambridge

The contemporary extension at Newnham College needed a first-class lighting scheme. The lighting gives the new wing an inviting warmth, while addressing the college's practical needs, and the scheme incorporates a light-filled homage to notable former students and research fellows.

In the café and social space a large-scale chandelier creatively connects the present with the past. Comprised of flying "pages" the piece is etched with documents and letters, written by women associated with the college, some of which can be read from the first floor. Carefully positioned lighting within and surrounding the installation adds to the theatre by creating playful shadows.





CLOCKWISE FROM TOP LEFT:
2/ Lobby 3/ Main Cafe Hall
4/ Theatre

Residential

ström

Chelsea Barracks

Defined by softly illuminated public walkways and beautifully lit garden squares, the lighting scheme for Qatari Diar's 12.8-acre former military barracks is a deliberately restrained design response to the masterplan by [Squire & Partners](#), [Dixon Jones](#), [Kim Wilkie](#) and landscape design by [Gustafson Porter + Bowman](#).

To achieve a traditional lighting aesthetic, we first worked with the landscape architect to develop a signature lamp post in collaboration with [Maynard](#) and [Neri](#). The elegant columns might look conventional but there's much more to them than meets the eye – not only do they provide high-tech lighting (with no light spill), they also house cameras and Wi-Fi access points.

For the stone-built residences, exterior lighting is purposely restrained to preserve the surrounding architecture and streetscape. To honour the only surviving structure from the original barracks, The Garrison Chapel, we lit its bell tower and added a graze of light to the brick facade and underneath handrails of the new-build stairs.

Designed to meet a sustainable [BREEAM](#) rating, the public realm lighting solution blends seamlessly with neighbouring areas. When you wander into [Chelsea Barracks](#), you don't sense a break in the intensity or quantity of light from surrounding streets. But you do notice a change in the quality.





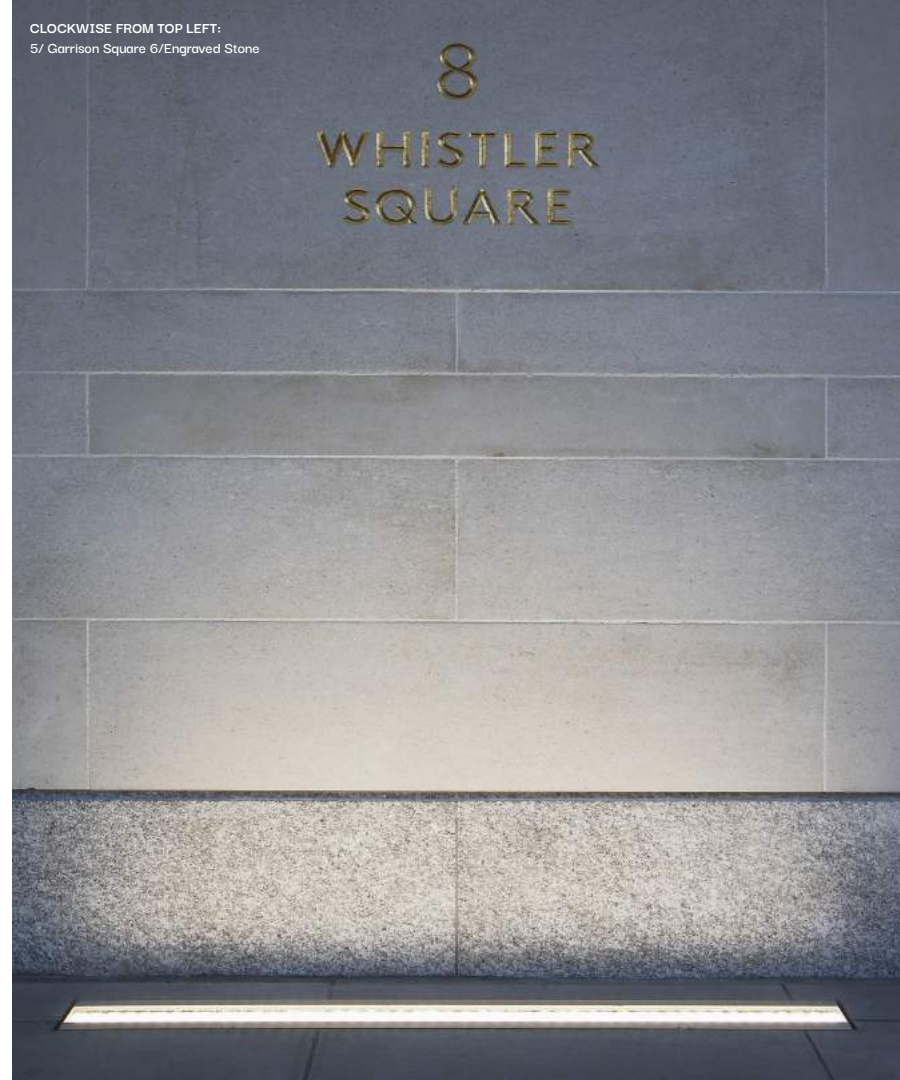
CLOCKWISE FROM TOP LEFT:
2/ Whistler Square 3/ Bourne walk
4/ No. 8 Whistler Square Entrance

Project with NULTV / Photography by J French





CLOCKWISE FROM TOP LEFT:
5/ Garrison Square 6/Engraved Stone



Herbrand Walk

This Art Deco styled property's large footprint surrounds a commanding atrium with an outlook of the expansive infinity pool and sweeping sea views of the South Coast of England.

The only asymmetric aspect of the building is its entrance which is uplit from a seamless row of uplights located under the entrance canopy, lobby and main entrance hall to draw you into the space.

To emphasise the double-height atrium, and to provide ambient illumination throughout, we opted for track lighting to gently highlight the walls from floor to ceiling and pinspot artwork.

The lighting design continues with recessed magnetic track lighting to accentuate artwork, and with downlights located in key locations.



CLOCKWISE FROM TOP LEFT:
2/South Elevation 3/ Atrium
4/Uplighting to core wall



Project with NULTY / Photography by A Tye

Leisure & Hospitality

ström

Harrods Wellness Clinic

This 975 square meter haven is world class and boasts a sophisticated, refined and calm interior scene that is set by one essential ingredient: light.

Escapism is key to The Wellness Clinic architectural lighting design success – elements were designed to reinforce a tranquil environment, with cooler daylight tones used to promote a feeling of space and wellbeing. This wasn't easy though, because the clinic is in the heart of the department store's fourth floor, with no natural light.





CLOCKWISE FROM TOP LEFT:
2/ Reception 3/ Corridor to Treatment
Room 4/ Treatment Room



Rowbots

Rowbots is a rowing gym (co-founded by footballer Gareth Bale and Olympic rower Will Satch) that needed a raw and innovative lighting scheme to work with the "post-apocalyptic" interior design theme.

In partnership with Sarah Mannerings Studio, we created a bold lighting design defined by contrasting tones of blue and amber illumination and graphic lines of light that add elements of drama.





CLOCKWISE FROM TOP LEFT:
2/ Reception Desk 3/ Street Entrance
4/ Changing Areas

Project with NULTV / Photography by James French



The Connaught Patisserie

With plush furnishings, a dusty pink colour palette, marble tabletops and velvet surfaces, The Connaught Patisserie on Mayfair's exclusive Mount Street is the place to savour a sweet treat.

Designed by Ab Rogers Studio the pink blush walls form the backdrop for striking crystal pendants that are positioned along the ceiling to illuminate the marble tabletops. The hand blown pink pendant displays a gradual fade in colour and houses a carefully chosen light source to produce a sparkling effect, while making the cakes and pastries look their best.





CLOCKWISE FROM TOP LEFT:
2/ View from lobby 3/ Banquette seat
4/ Feature Pendant

Hemsley & Hemsley

This healthy living eatery is located within Selfridges 'Body Studio'. The café's lighting design complements the wider interior design but offers a sense of sanctuary. The interior's light and airy with bamboo-coloured walls and plants scattered throughout.

It was important to balance the effects of vibrancy and tranquility so we used three layers of illumination to bring out the natural tones. Pendants hang over tables for intimacy; overall ambience is set at a different tone and light level to the rest of the Body Studio, making it feel warm and calm; with soft lighting around the edge of the space to blend the overall effect.

There is no natural light within the floor plates so cove lighting with much cooler colour temperatures were used to create a sense of borrowed natural light.





CLOCKWISE FROM TOP LEFT:
2/ View out to retail floor 3/concierge
table 4/ Faux 'Daylight' cove detail

Hard Rock Hotel

This rare combination of Hotel, Bar & Rock Shop by Hard Rock required both the flexibility needed for hotel use and the glamour their client base expect from a Hard Rock Bar, hosting live acts every night of the week.

Once you've been seduced by the feature entrance portal you are drawn to the main bar which sits beneath radiating brass fins and over 2000 LED nodes providing illumination and [striking colourful patterns](#) (from sparkling stars to pulsing chevrons).

The 'Rock' connection with inspired a custom drumstick light feature creates a sparkling check-in experience over the reception desk.

Not to be outdone the 'Rock Shop' creates an equally moody environment with footlights at the counter and some glamorous pendants to draw the eye.



MAIN IMAGE:
1/ Spectacular entrance portal to
the Hotel Lobby.



CLOCKWISE FROM TOP LEFT:
2/ The Rock Shop 3/ Central Bar
4/Drumstick chandelier 5/
Concierge desk and memorabilia.

Project with NULTY / Photography by J French



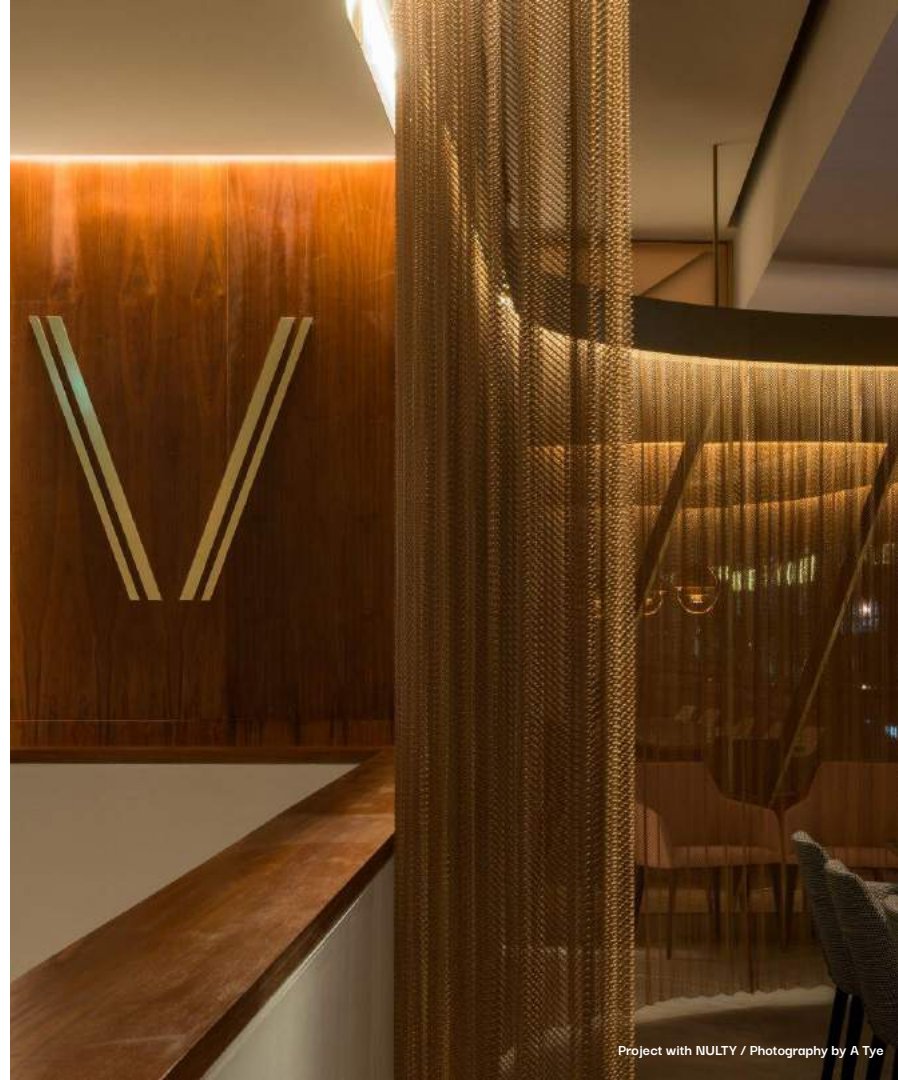
VIVI Restaurant

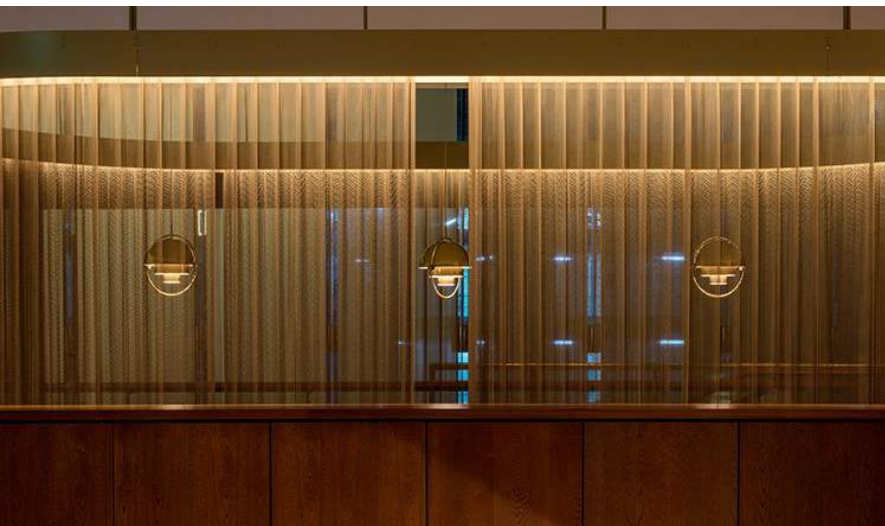
This large scale restaurant by the fine dining group 'Rhubarb' sits within the original convention space at the foot of London's 34 storey, Brutalist, Centre Point tower.

VIVI is a nod to the birth year of Centre Point; repeated roman numerals for "66" and The interior design by Gordon Young Architects left no shortage of luxurious and feature materials to be illuminated.

It's vast open plan floor plate has floor to ceiling glazing on two sides requiring the use of concealed light sources and diffuse lighting effects to preserve views out over Tottenham Court Road at night.

Lighting was also used to create intimate pockets and zones within the space such as the feature bar and private dining areas at either end of the venue.





CLOCKWISE FROM TOP LEFT:
2/ Cocktail Bar 3/ External render
4/ Feature Pendant 5/ Private Dining.

Project with NULTY / Photography by A Tye

ArchLight Cinema

Our role within this London based Cinema project was to deliver the lighting design elements conceived by [Ab Rogers Design](#) that's characterised by bold use of colour, materiality and movement.

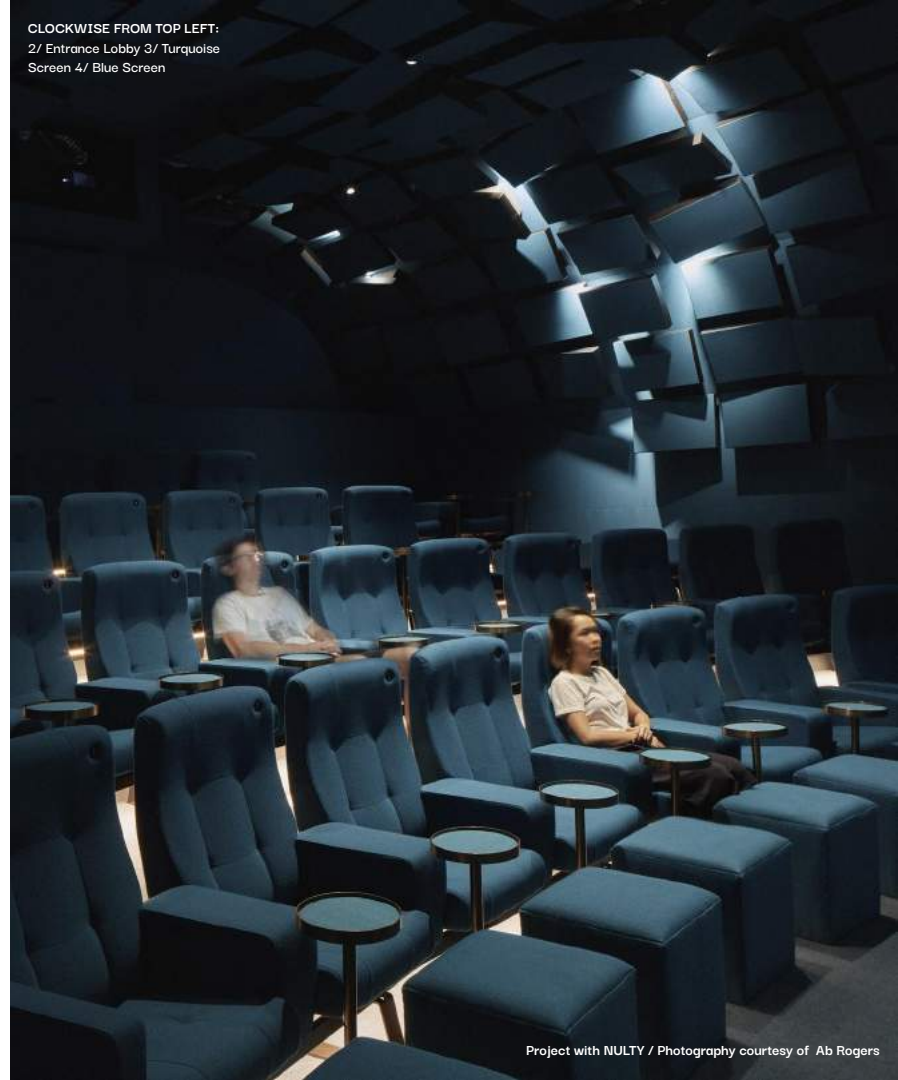
Each of the three screens has a striking three-dimensional ceiling of angled acoustic panels that enhance the cinematic experience. To strengthen the dramatic design, we carefully positioned discreet spotlights behind the individual panels and calculated exactly how light would travel across the angled surface to provide dramatic shadow play.

The illuminated panel ceilings have individual lighting scenes. On arrival moviegoers are given time to enjoy the play of light across the dramatic ceiling. The lighting then slowly dims as the film starts. The form of the ceiling is always visible, but slowly fades into the background so it doesn't detract from the screen.





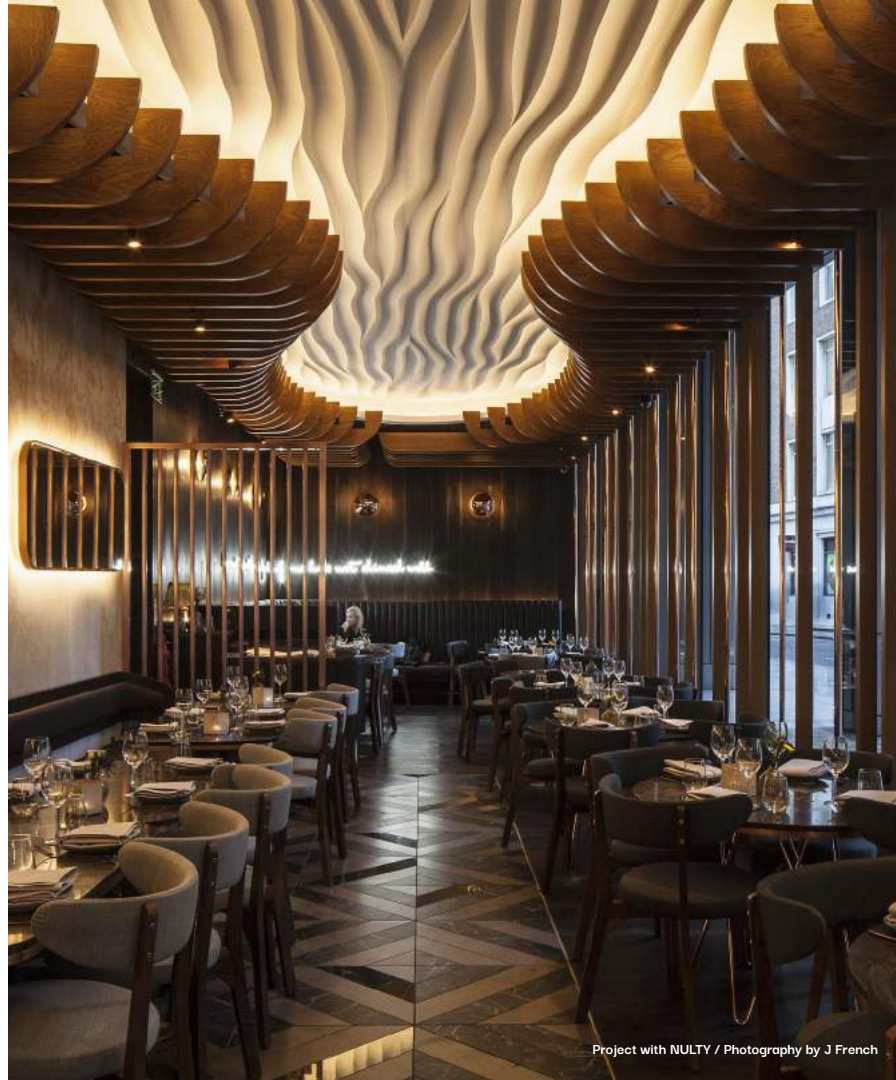
CLOCKWISE FROM TOP LEFT:
2/ Entrance Lobby 3/ Turquoise
Screen 4/ Blue Screen

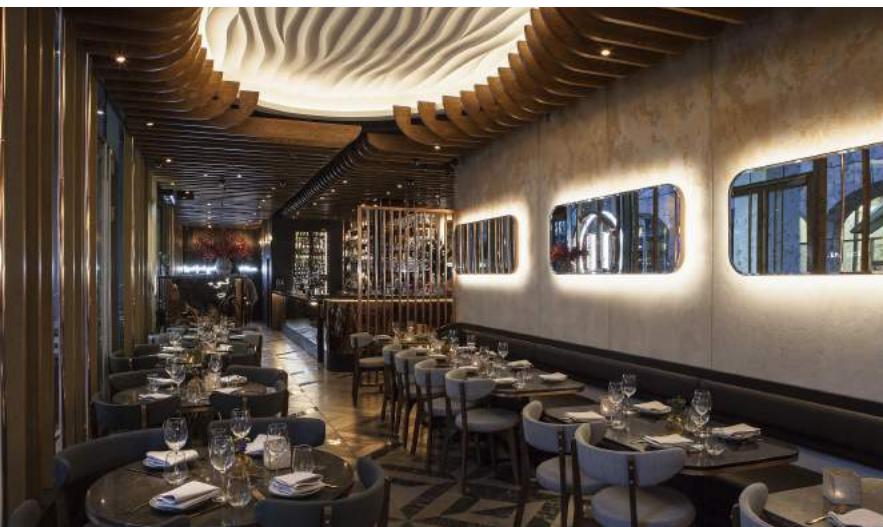


Haz Restaurant

An interior makeover with quirky design details and a new material palette has transformed this Mediterranean restaurant – and the all-LED lighting scheme brings everything to life.

The ceiling is comprised of dark timber slats and textured gypsum. Between the slats sit custom downlights and because of their warm colour temperature, they make the space feel cosy and inviting. Lights are angled towards the tables and bar to form pools of light, making cutlery and glassware sparkle.





CLOCKWISE FROM TOP LEFT:
2/ Main Restaurant 3/ Bar servry
★banquette seating



Workshop Coffee

We were invited by the owners of Workshop Coffee. They invited us to create a flexible lighting design that would achieve the right ambience at all hours, while keeping to the style of the existing interior design.

The large windows and skylight allowed us to make the most of the natural daylight, and the space was transformed at night through contrast and accent lighting directed onto the tables and shelving units.

Working to a modest budget, we used reclaimed light fittings to reinforce the industrial atmosphere, and added a control system – which dims and changes the lights through the day depending on daylight levels – to save energy.





Scarpetta

From the outside in, the all-LED lighting scheme had to work with the non-negotiable tinted windows – the space needed to look “open”, not dark and dreary. To make this happen a mix of lighting was used: from pendants and neon signage, to decorative fittings and the illumination of vertical surfaces,

Bare lamps at the tip of a conduit installation add warmth, pick up the wooden backdrop and draw focus to the menu boards. As for the ingredients, the beautifully branded bags of flour and coffee sit in a large floor-to-ceiling display cupboard where a simple lighting detail (LED strips at the bottom of each shelf) creates a *big* impact.

High ceilings and exposed surfaces certainly make the space feel open and airy, but to make it more intimate above the seating areas, a dropped copper raft ceiling was installed. Here we purposely chose transparent pendants because the light also captures the warmth of the copper material.





Thanks / Tack

ström